



ROADMAP FOR REUSE

PRIORITIES FOR THE BRUSSELS-CAPITAL REGION UP TO 2025

Stéphanie Uny – Member of Cabinet



BRUSSELS CAPITAL REGION

ID

- 1 238 689 hab
- 7 676 hab./km² and up to 23.000 hab./km²
- 19 municipalities

Compétences

- environment, water policy and nature conservation
- economy (economic development, foreign trade, etc.) & employment policy

Economy

- Mainly tertiary; many, many institutions



INCINERATION OF UNSORTED WASTE IN 2021

- **496.443 tonnes** of incinerated waste
- 470.730 tonnes of CO₂ emissions (**7%** of total direct emissions in RBC)

200x



150,000x



HULPBRONNEN- EN AFVALBEHEERPLAN

Voor een duurzame, sobere, lokale en circulaire consumptie
Voor een afvalloze maatschappij



Plan definitief door de Regering van het Brussels Hoofdstedelijk
Gewest aangenomen op 15 november 2018

LANSINK'S LADDER - THE WASTE HIERARCHY

A Reduce

B Re-use

C Recycling

D Energy

E Incineration

F Landfill

**OUR GOAL: SEND 30% LESS WASTE
TO THE INCINERATOR BY 2030**



**ZERO WASTE
FAST FORWARD**

WHY?

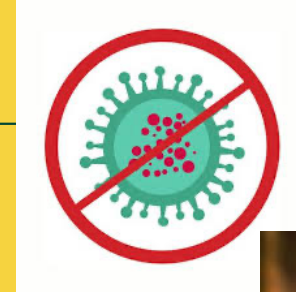
- To reduce the **environmental impact** of waste and its treatment:
 - Less incineration means less CO2
- To reduce the waste of resources:
 - **More re-use** and therefore local enterprises & jobs
 - More recycling, and more possibilities to give a second life to our waste
 - Food waste that is transformed into renewable and local energy (through biomethanisation) and into compost to fertilise the soil
- To make the **living environment more pleasant** for the people of Brussels:
 - Fewer kilometers travelled by collection trucks > less congestion, less noise
 - Less rubbish in the streets



**ZERO WASTE
FAST FORWARD**

SOCIAL & ECONOMIC CONTEXT

- Covid-19 pandemic
- economic activity strongly impacted
- employment stabilised thanks to support measures
- economic forecasts show catching up
- but the Brussels economy clearly needs to transition
- and now sharp rise in energy and raw material have major impact on the competitiveness of businesses => economic transition makes it possible to be less dependent on external variables



GO4 BRUSSELS 2030

Stratégie Go4Brussels 2030

Engager Bruxelles sur la voie de la transition économique, sociale et environnementale

Bruxelles, le 16 janvier 2020

PROGRAMME RÉGIONAL EN ÉCONOMIE CIRCULAIRE

2016 – 2020

Mobiliser les ressources et minimiser les richesses perdues :

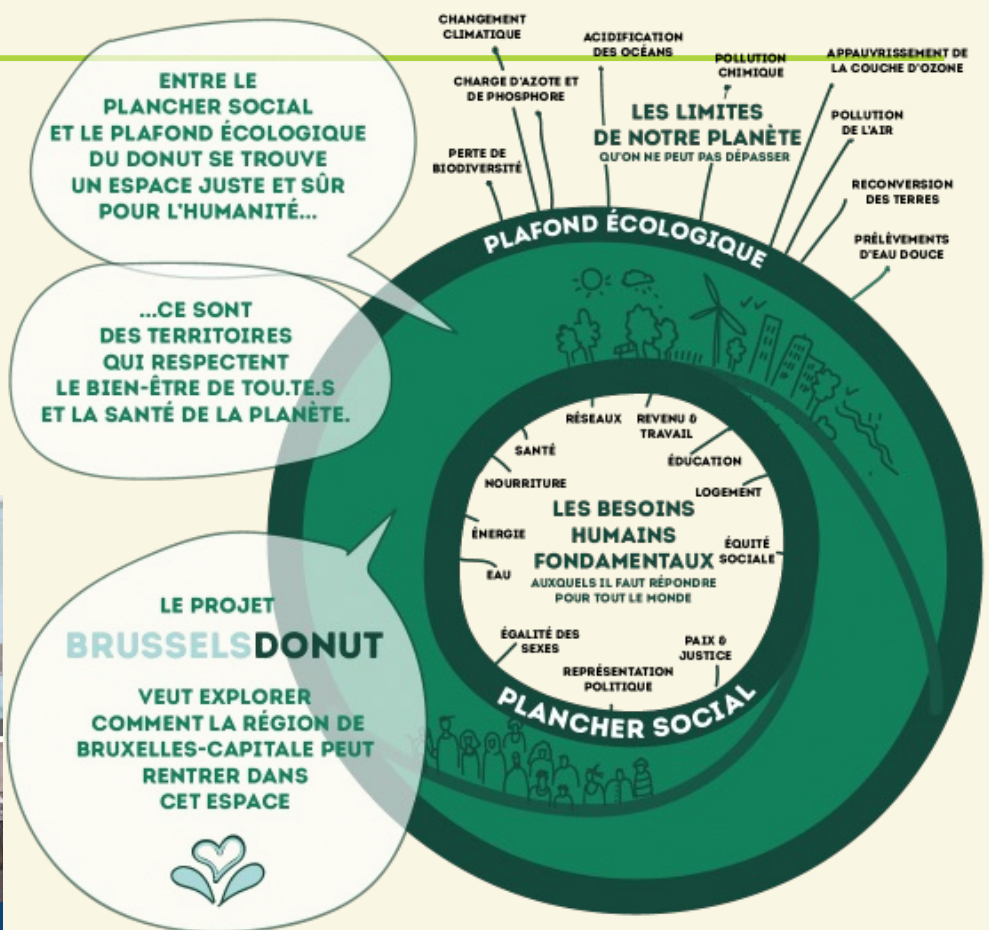
Pour une économie régionale innovante



OUR GOAL:



STRATÉGIE RÉGIONALE DE TRANSITION ÉCONOMIQUE
2022 - 2030



WHY?

> MEETING THE CLIMATE CHALLENGE

AT LEAST -40% EMISSIONS BY 2030, DECARBONISATION BY 2050
PRESERVING A HABITABLE CITY
PRESERVING THE QUALITY OF LIFE OF THE PEOPLE OF BRUSSELS

> MEET THE ECONOMIC CHALLENGE

THE QUANTITY OF AVAILABLE RESOURCES IS LIMITED
THE PRICE OF RAW MATERIALS IS RISING
NEED TO RELOCATE PRODUCTION CHAINS

> RESPONDING TO THE SOCIAL CHALLENGE

PRESERVE AND CREATE QUALITY JOBS
TO MEET THE ESSENTIAL NEEDS OF OUR INHABITANTS



REUSE IS A TOOL AND AN OBJECTIVE

AND IT NEEDS A STRATEGY!



**ZERO WASTE
FAST FORWARD**

REUSE ROADMAP - OBJECTIVES

To **strengthen** the availability of Brussels repair and second-hand shops and businesses

A **sustained** social economy to maximise repair and preparation for re-use activities in Brussels

An equipment potential for professional activities to be **identified and properly managed**

For an **integrated vision** of the Brussels household waste collection system

For a clarification of **waste (pre)treatment** infrastructure needs in Brussels



REUSE ROADMAP - SCOPE

- defines "reuse" and "preparation for reuse"
- limited to the waste management framework and only deals with the "supply" aspect (including exemplarity of public authorities in terms of donations from public administrations)
- Does not include preparation for reuse and reuse of construction or demolition materials, packaging, other extended producer responsibilities
- limited to the framework of the Region's competences

REUSE ROADMAP - PRIORITIES TO 2025

A framework of 15 measures around 3 main axes :

1. **access to the stock** of public and private objects and materials
2. a **public framework** facilitating repair and resale activities
3. tests and implementation of **pilots in reuse** projects

Objective: from 3 kg/y/inh to 5 kg/y/inh



ACCESS TO THE STOCK

- Positive discrimination towards circular actors for access to waste & resource deposits
- Extended Producer Responsibility (EPR) extended to new flows (mattresses since 2021; textiles in 2025...)
- Partnerships with social economy for access to certain deposits of reusable equipment (in compliance with competition law)
- Stimulate municipalities to create local reuse centers (via call for proposals) and develop new adapted recycling parks
- Analyse the necessary conditions to facilitate donation of equipment by public administrations



TESTS & PILOTS IN REUSE PROJECTS

- Stimulating economic actors for repair & 2nd hand services via Circular Calls for Proposals
- Collaboration between the local waste collection agency & the environmental agency to increase the number of preserving collections
- setting up an online and physical material library
- examining the potential for reuse of equipment within companies
- Research/action project on the potential for perpetuating the various tool library models

FOCUS: DEVELOPING LOCAL THRIFT SHOPS THROUGH MUNICIPALITIES & CPAS



2018 : 3 municipalities

2021: 11 municipalities study or develop a project with LB's support (financial & guidance)



OTHER STRATEGIES

EXTENDED PRODUCERS' RESPONSIBILITY > a shift to reuse

PUBLIC PROCUREMENT > a shift in exemplarity

RENOLUTION > reuse in construction materials

INNOVATION > new ways and processes

REUSE ROADMAP – FUTURE NEEDS

(Shifting Economy strategy)


- Entrepreneurship-friendly environment
- Financing System adapted for economic actors who work for transition or start transition
- Support framework for these actors
- Hosting solutions
- Stimulate Sustainable and Innovative Public Procurement
- Innovation Journey for Circular Economy
- Promote and sustain Social and Democratic Entrepreneurship




QUESTIONS? THANK YOU!


> **suny@gov.brussels**

https://environnement.brussels/sites/default/files/user_files/2022_feuille_de_route_reemploi_2025_fr.pdf

 @alainmaron

 @alain-maron-8859125

 @alain_maron

 @AlainMaronEcolo